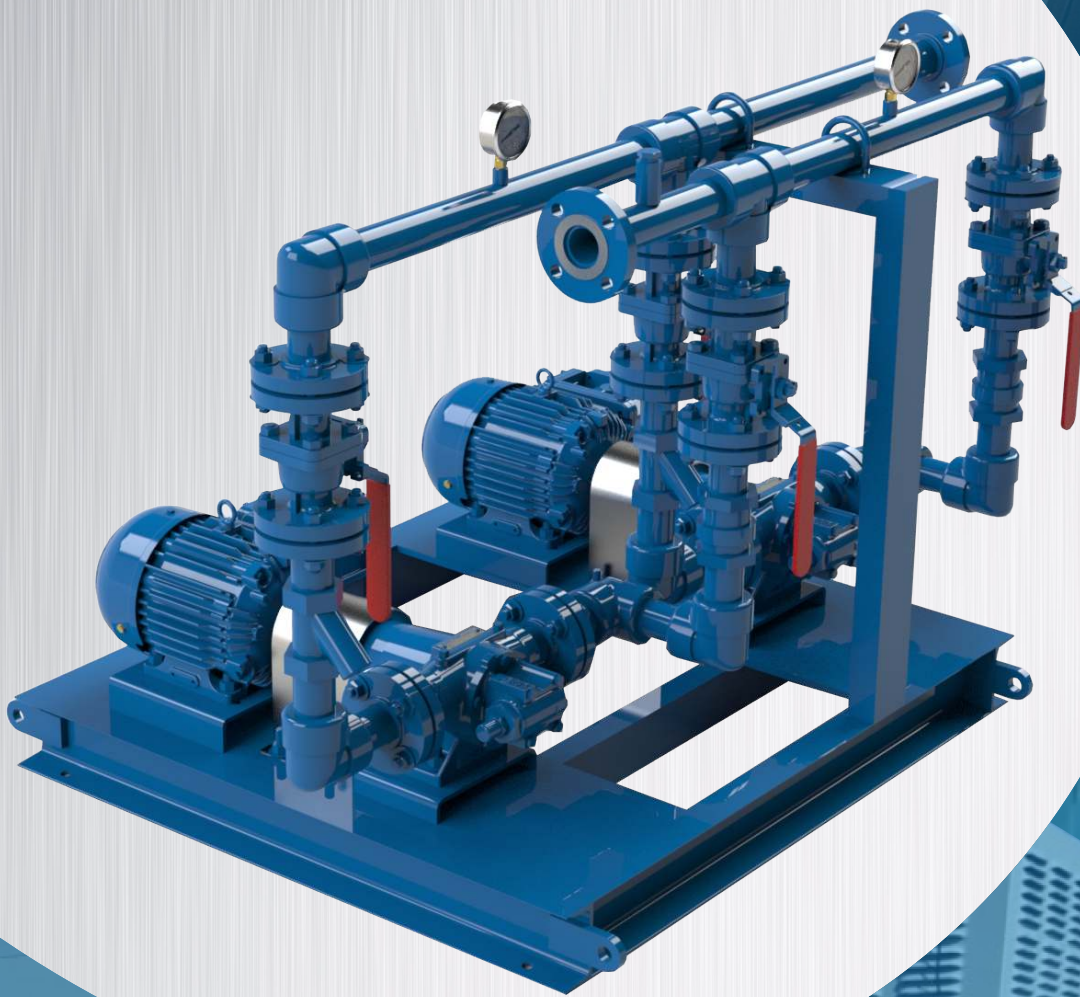


DFO Skid

Duplex Fuel Oil skid is used as an auxiliary supply support skid to the generators, boilers, etc for emergency fuel supply. Fuel ranges from Diesel, Petrol, fuel oil, etc.



Turbine Generator

Boilers

Emergency Generator

VIKING - Duplex Fuel Oil Skids - Details

Pressure Gauges

- 0-200 psi
- 2.5" Dial

Motors

- IEC Frame
- 50Hz / 60Hz
- FLP
- IIA, IIB
- T3/T4

Options

- ATEX/NON ATX
- UL/NON UL

Pumps

- 2 Pumps per skid
- 1 Running/1 Standby
- Inbuilt mechanical seal & RV
- MOC Cast Iron (ASTM & ISO)
- Performance as per API 676

Options

- UL Listed pumps
- MOC: CS, SS316

Piping

- Pipes: CS, SCH 40
- Fittings: CS, 3000#

Check & Ball Valve

- MOC Brass

Y - Strainer

- MOC Cast Iron
- Mesh: Ss304, 40#

Options

- Duplex basket

Baseplate

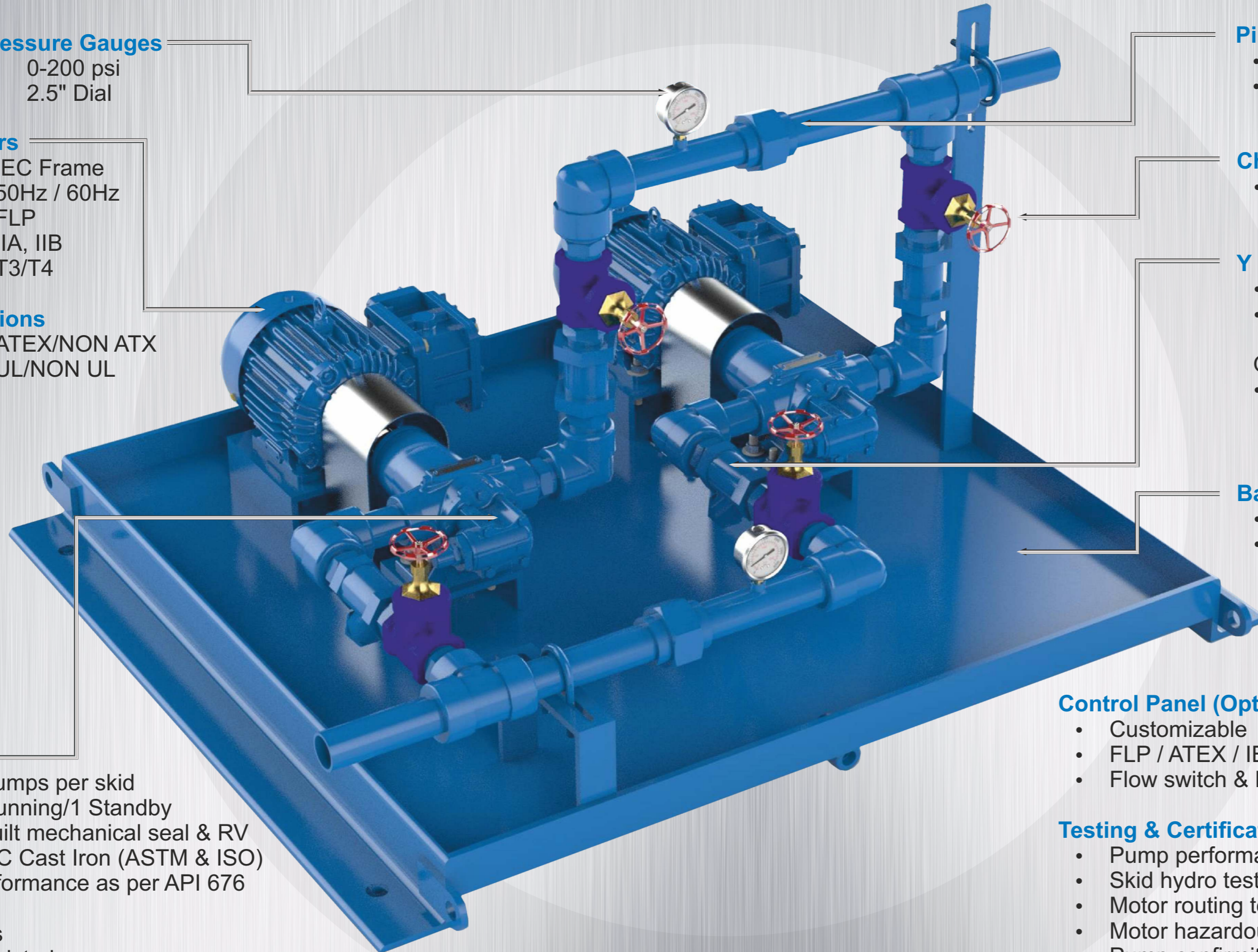
- MOC MS
- Drippan with drain

Control Panel (Optional)

- Customizable
- FLP / ATEX / IEC / NEMA std.
- Flow switch & Pressure switch

Testing & Certification

- Pump performance test
- Skid hydro test
- Motor routing test
- Motor hazardous area/ATEX/CCOE
- Pump confirmity / Tracebility - Optional



Technical details

Model Number	Skid Style	Ports Size	Diesel Viscosity (cP)	Max Pressure (Bar)	Flow Rate Received (LPM)	Motor Rating
G4195 -1-DFO	NPT/Welded & Flanged	1"	3cP	5	22 LPM @ 1450 RPM	1HP/1450 RPM
G4195 -1-DFO	NPT/Welded & Flanged	1"	3cP	5	28 LPM @ 1750 RPM	1HP/1750 RPM
GG4195 -1-DFO	NPT/Welded & Flanged	1"	3cP	5	30 LPM @ 1450 RPM	1HP/1450 RPM
GG4195 -1-DFO	NPT/Welded & Flanged	1"	3cP	5	37 LPM @ 1750 RPM	1HP/1750 RPM
H4195 -1.5-DFO	NPT/Welded & Flanged	1.5"	3cP	5	42 LPM @ 1450 RPM	2HP/1450 RPM
H4195 -1.5-DFO	NPT/Welded & Flanged	1.5"	3cP	5	54 LPM @ 1750 RPM	2HP/1750 RPM
HJ4195 -1.5-DFO	NPT/Welded & Flanged	1.5"	3cP	5	60 LPM @ 1450 RPM	2HP/1450 RPM
HJ4195 -1.5-DFO	NPT/Welded & Flanged	1.5"	3cP	5	75 LPM @ 1750 RPM	2HP/1750 RPM
HL4195 -1.5-DFO	NPT/Welded & Flanged	1.5"	3cP	5	82 LPM @ 1450 RPM	3HP/1450 RPM
HL4195 -1.5-DFO	NPT/Welded & Flanged	1.5"	3cP	5	103 LPM @ 1750 RPM	3HP/1750 RPM
AS4195 -2.5-DFO	NPT/Welded & Flanged	2.5"	3cP	5	150 LPM @ 1450 RPM	5HP/1450 RPM
AS4195 -2.5-DFO	NPT/Welded & Flanged	2.5"	3cP	5	188 LPM @ 1750 RPM	5HP/1750 RPM
AK4195 -2.5-DFO	NPT/Welded & Flanged	2.5"	3cP	5	247 LPM @ 1450 RPM	7.5HP/1450 RPM
AK4195 -2.5-DFO	NPT/Welded & Flanged	2.5"	3cP	5	304 LPM @ 1750 RPM	7.5HP/1750 RPM

